



FARROW
ESTATE AGENTS



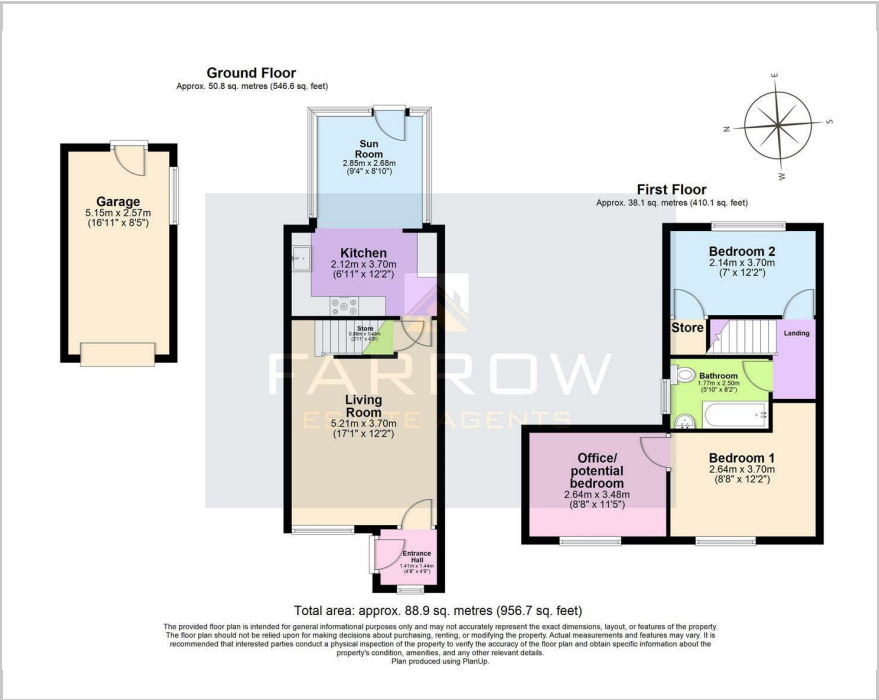
20 Yardley Way, Grimsby, DN34 5UQ

Asking price £135,000

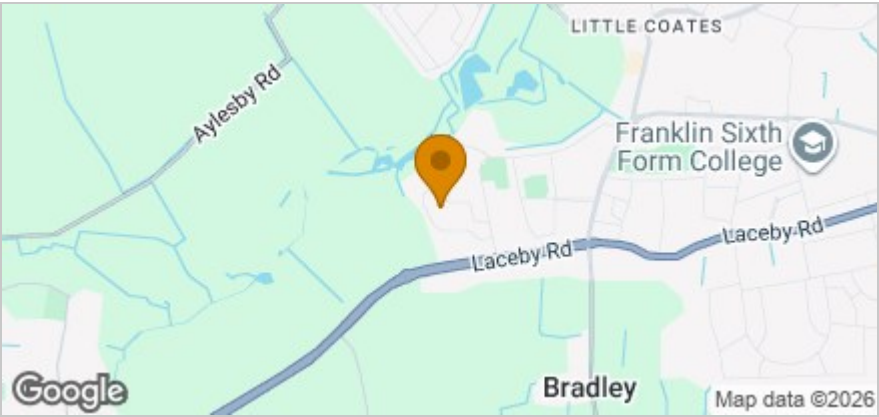
FARROW
ESTATE AGENTS



Floor Plan



Area Map



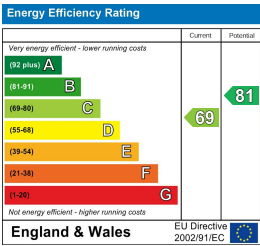
Accommodation

- Ideal For First Time Buyers / Investors / Downsize
- Quiet Laceby Acres Location
- Two Bedrooms With Extra Room For An Office / Dressing Room
- Gas Central Heating & Double Glazing
- Front Driveway & Carport
- Easy Access To A16 & A46 Road Links
- Great Schools Catchment Area
- Short Walk To Amenities
- Popular (DN34) Location
- Secured Low Maintenance Rear Garden

Viewing

Please contact our Farrow Estate Agents Office on 01472 355864 if you wish to arrange a viewing appointment for this property or require further information.

Energy Efficiency Graph



These particulars, whilst believed to be accurate are set out as a general outline only for guidance and do not constitute any part of an offer or contract. Intending purchasers should not rely on them as statements of representation of fact, but must satisfy themselves by inspection or otherwise as to their accuracy. No person in this firms employment has the authority to make or give any representation or warranty in respect of the property.